



Advice about School Attendance

with Sam and Sammie!



School attendance advice for you



This leaflet explains why you need to attend school and where you can get good advice and help.

Remember

Your education is important - don't miss out!

Did you know?

Two school days missed each month equals one whole year of school missed.

Why is school so important?

A good education gives you the best start in life. If you are missing school regularly, you will fall behind with the work. You will also miss out on other aspects of school life such as friendship groups and other life skills.

When you want to get a job, an employer will look for a good school record. Young people who have not attended school regularly have less chance of getting a good job.

If you are missing school, you can easily get into trouble with the law.

The Law

Education Act 1996

It is the law that:

All children of compulsory school age (5-16) must receive a full time education. The school leaving date is the last Friday in June, in the school year in which the young person reaches their sixteenth birthday.

- Parents/carers are legally responsible for making sure you receive your education.
- Your parent/carer is responsible for ensuring that you attend school regularly and the school must be advised of the reason for any absence.
- If you do not go to school and there is no acceptable reason, the school may decide not to authorise your absence.
- In the most severe cases of poor attendance, the Local Authority may decide to take legal action against your parents/carers, or you could be the subject of an Education Supervision Order.



The role of the Education Welfare Officer (EWO)



If you are not attending school regularly, an EWO will be involved. If you have problems at school or at home, they will be able to offer support to you and your family, or to direct you to other people who can support you.

The majority of pupils attend school regularly and find it an enjoyable experience. However, some pupils do have some attendance difficulties for many different reasons, but they do not know who to contact for help and advice.

Education Welfare Officers work closely with schools and families to resolve attendance issues, arranging school and home visits if necessary.

An EWOs responsibilities include:

- Monitoring school attendance of pupils
- To provide a link between school, parents, carers and pupils where necessary
- To develop supportive relationships with parents, carers schools and pupils
- To identify, track and monitor any children who are missing from education



Missing School The Facts

1

Affects your learning

Missing school makes you 12 times more likely to leave school without a GCSE.



2

Long term consequences

If you miss school you are more likely to be out of work or even to be homeless at the age of 18.

3

Choose a better future

Persistently absent young people are more likely to be involved in crime.



4

Stay in school

78% of boys and 53% of girls are more likely to commit offences if they skip school.



5

Can effect basic skills

Some of the worst attenders are the weakest readers.



6

It all adds up

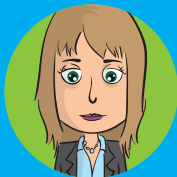
2 school days missed each month equals one whole year of school missed.



7

Think long-term

When you apply for a job, it is your schools duty to give you an honest reference about your attendance.



8

Keep up the good work!

An employer is more likely to give you a job if you attended school regularly.





For more information

To play, create, learn and grow, please visit:



www.samandsammie.com

